

## PARKING ARRANGEMENTS

After successful experience from previous Ryder Cups since 2002, other major sporting events and detailed discussions with the relevant authorities, a "Park & Ride" scheme (see below) was chosen as the best solution to minimise vehicle flows and reduce potential congestion in the local area.

A very limited number of vehicle and pedestrian movements will be permitted within the "Event Cordon Zone" around the Celtic Manor site in the time directly preceding, during and post the event. All residents whose properties actually fall within this zone have been contacted individually. That liaison will continue at regular intervals and as necessary.

During the event week there is no direct public pedestrian entry into the Celtic Manor site or general public parking at The Celtic Manor Resort. All public general parking will be at either the East Park & Ride or the West Park & Ride sites. From these Car Parks, there will be a 'park & ride' scheme in operation to transport people between those sites and The Celtic Manor Resort. Spectators and almost all the event staff will use the Park & Ride system, thus significantly reducing the volume of vehicles, particularly cars, needed to actually get to or from the Celtic Manor site. All vehicle access and egress to and from the Celtic Manor site is restricted to essential traffic only and carefully managed.

In order to minimise disruption to local communities, ensure that spectators use the Park & Ride facilities correctly and to prevent/discourage illegal or fly parking "No Parking /Tow Away Zones" will be established on major routes and local or estate roads adjoining or around the Celtic Manor site and the Park & Ride venues. These zones will not only prevent fly parking and reduce congestion but also enhance safety for all road users. Illegally parked vehicles may be removed and a charge will be made for recovery.

Residents in these areas will be given stickers to identify their vehicles to allow ease of access to and from their properties, and parking in the vicinity of their property (provided no obstruction is being caused to the highway).

## PARK AND RIDE VENUES

The East Car Park (Llanwern Steelworks) is located approximately 7 miles to the east of The Celtic Manor Resort. It is accessed from J23A (Magor Junction) off the M4 Motorway and is designed to service all event traffic travelling from England and east of the venue.

The West Car Park (Tredegar House) is located approximately 9 miles to the west of The Celtic Manor Resort. It is accessed from J30 of the M4 Motorway or the A48 and is designed to service all event traffic travelling from North Wales and west of the venue.

There will be a dedicated Staff Park & Ride operation at Usk Showground for event staff only. All spectators are encouraged to refer to the detailed travel information which will accompany tickets. All Taxis and Private Coaches not associated with Ryder Cup Travel Services must use the Park and Ride facilities to drop off and pick up spectators as they will not be allowed access to The Celtic Manor site. This is to again ensure the least impact on the Local Areas.

## PEDESTRIAN ACCESS

Safety and security measures and the absence of public car parking close to the Celtic Manor site means that pedestrian access for spectators WILL NOT be permitted. It will not be possible to park near the venue and then walk in to the event even if one is a ticket holder. It is not possible to buy tickets on the day at any time. All Spectators must use the 'Park & Ride' system.

A significant number of visitors are expected to travel to the event via specific packages on bus or train, thereby further reducing congestion on the motorway network and surrounding local roads.

## TICKETING

Ticketing checks for entry to The Ryder Cup will be administered at both 'Park & Ride' points by security staff, before spectators are then bussed to and from the Celtic Manor site on a fleet of buses and coaches. Plans are in place to rigidly check all spectator tickets at the Park & Rides, and the Bus Terminals. Spectators will be encouraged to arrive early, avoid rush hour periods and allow plenty of time to travel.

All spectators are encouraged to refer to the detailed travel and security information which will accompany their tickets. All tickets are for nominated ticket holders with no ticket sales on the gate and spectators will not be permitted to leave the event and return to it on the same day (i.e. No Pass-Outs). When spectators leave the Celtic Manor site they must return to their respective Park and Ride Site.

## ACCOMMODATION

Please remember that only those directly impacted by the event and within the Event Cordon Zone could be subject to separate transportation arrangements. All other spectators will be directed to the Park and Ride venues. If you are interested in letting out your property, please visit [www.rcts.co.uk](http://www.rcts.co.uk) for further details.

## RAIL TRAVELLERS

Transport arrangements are also in place for ticket holders intending to travel by train via Newport Rail station. Only rail passengers with Ryder Cup tickets will then transfer to shuttle buses directly to the Bus Terminal at the Celtic Manor site and they will be subject to the same security and ticketing checks.

## POLICING AND SECURITY

Gwent Police is prepared for a successful Ryder Cup and has spent a considerable period planning for the event, working closely with Ryder Cup Ltd and statutory agencies to ensure the safety and security of those attending the event and those using the surrounding roads and communities. Gwent Police will maintain a low-key policing presence at the event and policing in other parts of the area will not be affected by the staffing of the event.

Safety and Security will be provided by event security staff (G4S), supported by uniformed marshals, safety stewards and police.

## TRAFFIC PLANS

The Event Traffic plan details signing for Event traffic and signed diversion routes for through and local traffic. It is being produced in conjunction with the Highways Authorities and after consultation with the Police. It is intended that the road diversion and closure scheme should significantly improve the situation for local residents in gaining access to and from their homes/businesses, more equitably distribute the inevitable congestion, facilitate the park and ride schemes and provide the optimum safer environment for all concerned in and around site(s).

A wider communications strategy has commenced to ensure that residents and businesses in close proximity to the venue(s) are made aware of the plans and how vehicle movements/access are likely to be affected. Access to these properties for residents will still be maintained albeit that the additional traffic volume, particularly at peak periods, is likely to inevitably result in some degree of congestion.

On 1st January 2009, Gwent Police appointed a local liaison officer dedicated to issues relating to the preparation for the Ryder Cup. Contact can be made via this number if required 01633 647 050. Regular communications will be conducted through a series of public briefings, information bulletins/websites and as necessary individual contacts plus newsletters and via local and national media outlets.

This leaflet is part of the overall communications plan to ensure that residents within the affected area, together with commuters, local businesses, visitors and other residents around the area have advance warning of the traffic plans and road closure programme.



# THE 2010 RYDER CUP

## Traffic Information



For Ryder Cup information, please visit:

[www.rydercup.com](http://www.rydercup.com)  
[www.europeantour.com](http://www.europeantour.com)



Heddlu  
Gwent  
Police



Wales  
Cymru



The 2010 Ryder Cup due to be held at The Celtic Manor Resort, from 28th September until 3rd October is expected to attract up to 45,000 people each Match day and on Practice Days and plans are in place to minimise the disruption to neighbouring communities and commuters on main roads.

The event organiser, Ryder Cup Limited in conjunction with Gwent Police, Newport City Council, The Highways Agency, The Welsh Assembly Government, Ryder Cup Wales, The Celtic Manor Resort plus local community groups and other Emergency Services and Agencies have looked in detail at these arrangements in light of security measures and the road network in the surrounding area. The overriding objectives are a secure event with minimum disruption to the local communities and ease of access and a warm welcome for all visitors.

This has particularly concentrated on the traffic and parking plans which have been developed to relieve the pressure on the local residents around the Celtic Manor site and the other venues affected by the event.

The traffic plans during The 2010 Ryder Cup therefore reflect a partnership approach involving all the key agencies aimed at addressing the requirements of the local/regional transport network and infrastructure around Newport and neighbouring towns and villages, as well as running the event safely and efficiently.

### ROAD CLOSURES

In the interests of safety and security there will be an "Event Cordon Zone" perimeter around the site involving closure of roads through and around the Celtic Manor site. These will be closed throughout the event from 23.59 hrs on Sunday 27th September until 23.59 hrs on Sunday 3rd October. Should the event be affected by adverse weather, play could extend to Monday and the road closure would also extend through until the event is finished.

The Bulmore Road will be closed to all except Bulmore Road residents, or those visiting residents, on this road from 1st July 2010 due to the pre-build for The 2010 Ryder Cup.

Whilst it is impossible to stage an international event of this size and status without inconvenience to some people, the organisers are anxious to ensure minimal disruption to the residents and commuters of Newport and neighbouring areas as a result.

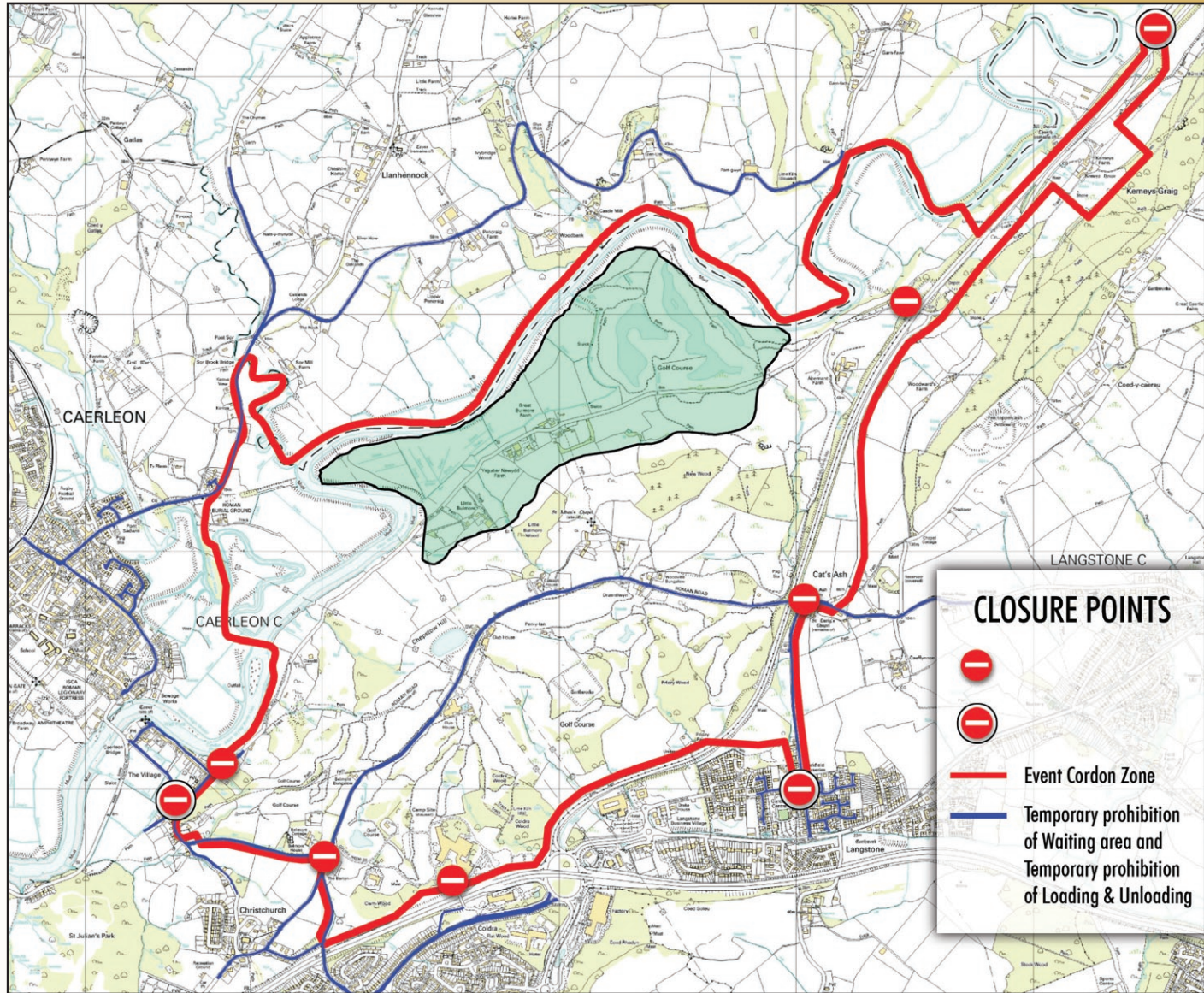
### SIGNAGE

Advance signage will be in place significantly prior to the event to advise drivers and commuters to consider all routes with the main priority being to keep the Coldra Roundabout and M4 as free as possible for commuters and every day usage

### RESIDENTS PASSES

Special vehicle passes will be printed by the organiser and distributed by the local Police liaison officer to all residents living within the Event Cordon Zone (indicated on enclosed map) to allow 24 hour access to their homes and frontages. Details of how these passes will be distributed will be made available nearer the time.

Arrangements will be in place regarding routine deliveries, utility vehicles and emergency vehicle access. Liaison will be maintained with residents in these areas to address both group and/or individual concerns.



For Ryder Cup information, please visit:

[www.rydercup.com](http://www.rydercup.com)  
[www.europeantour.com](http://www.europeantour.com)